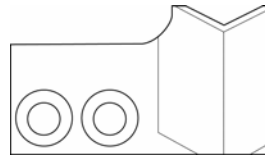


## Gamma 333

# Blades

### > Bottom & bad wire cut blade

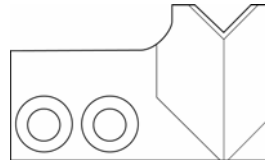
- Standard



037862

Works with most insulations, comes standard with the machine.

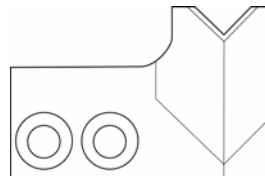
- Heavy



041596

For 2.5 – 4 mm<sup>2</sup> cross sections and special insulations like teflon or silicone. Slightly longer than the standard.

- 6mm<sup>2</sup>



041557

For 4 – 6 mm<sup>2</sup> cross sections. Blue-grey colored. This blade is the longest, also the beveled edge is not as steep.

## Gamma 333

# Blades

---

### > Top cut blade

- Standard



030297

Works with most insulations, comes standard with the machine.

- Heavy



041595

For 2.5 – 4 mm<sup>2</sup> cross sections and special insulations like teflon or silicone. Slightly longer than the standard.

- 6mm<sup>2</sup>



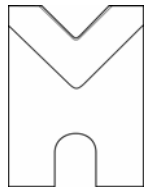
041556

For 4 – 6 mm<sup>2</sup> cross sections. Blue-grey colored. This blade is the longest, also the beveled edge is not as steep.

# Gamma 333 Blades

---

## > V-Form strip blade

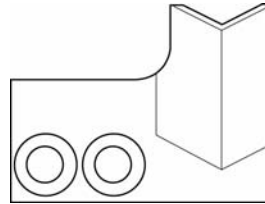


030299	Radius = 0.1mm
033958	Radius = 0.5mm (Standard with machine)
033959	Radius = 0.75mm
033960	Radius = 1 mm
033961	Radius = 1.5mm
033962	Radius = 2 mm

# Blades

## > Top bad wire cut blade

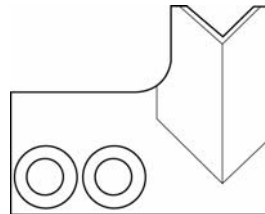
- Standard



037943

Works with most insulations, comes standard with the machine.

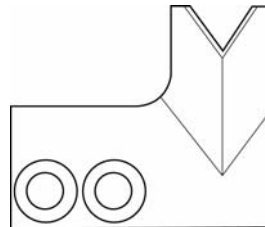
- Heavy



041597

For 2.5 – 4 mm<sup>2</sup> cross sections and special insulations like teflon or silicone. Slightly longer than the standard.

- 6mm<sup>2</sup>



041558

For 4 – 6 mm<sup>2</sup> cross sections. Blue-grey colored. This blade is the longest, also the beveled edge is not as steep.