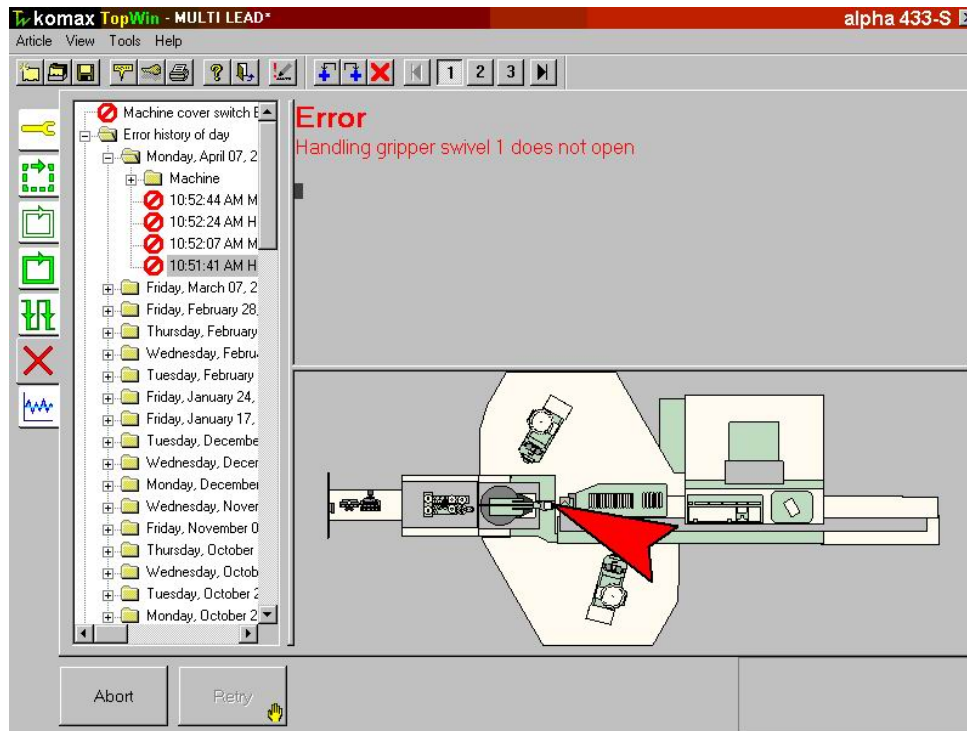


ALPHA 433

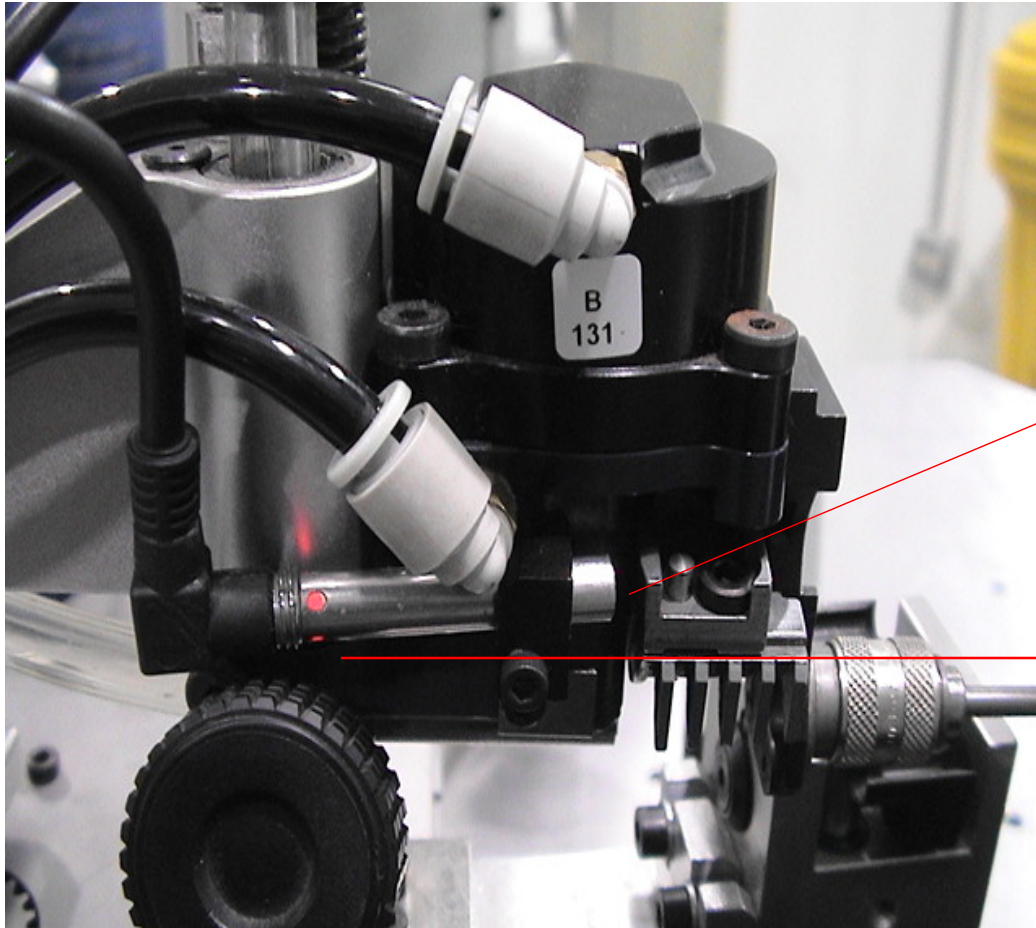
Handling Gripper Error



Handling gripper Swivel side 1 does not open.

ALPHA 433

Handling Gripper Error



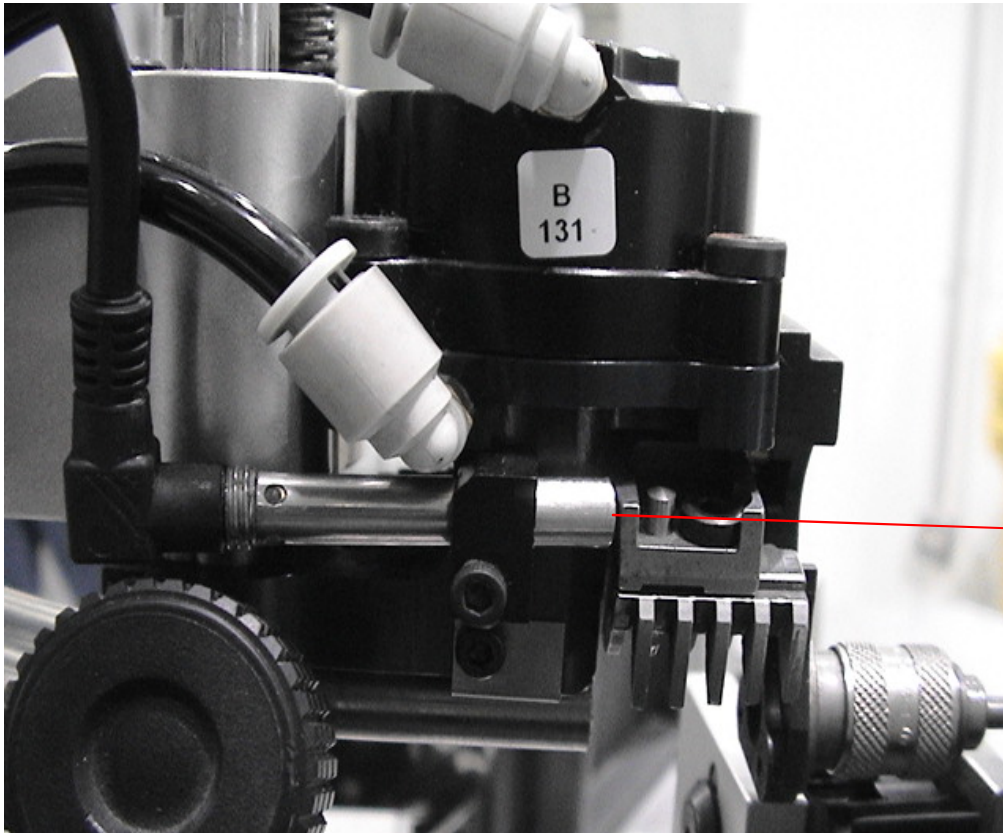
Check the gripper sensor gap 0.5 mm

*Note

The red sensor lite will be off when the gripper is being detected

ALPHA 433

Handling Gripper Error



Adjust the sensor gap distance
from the gripper

0.5mm gap distance